

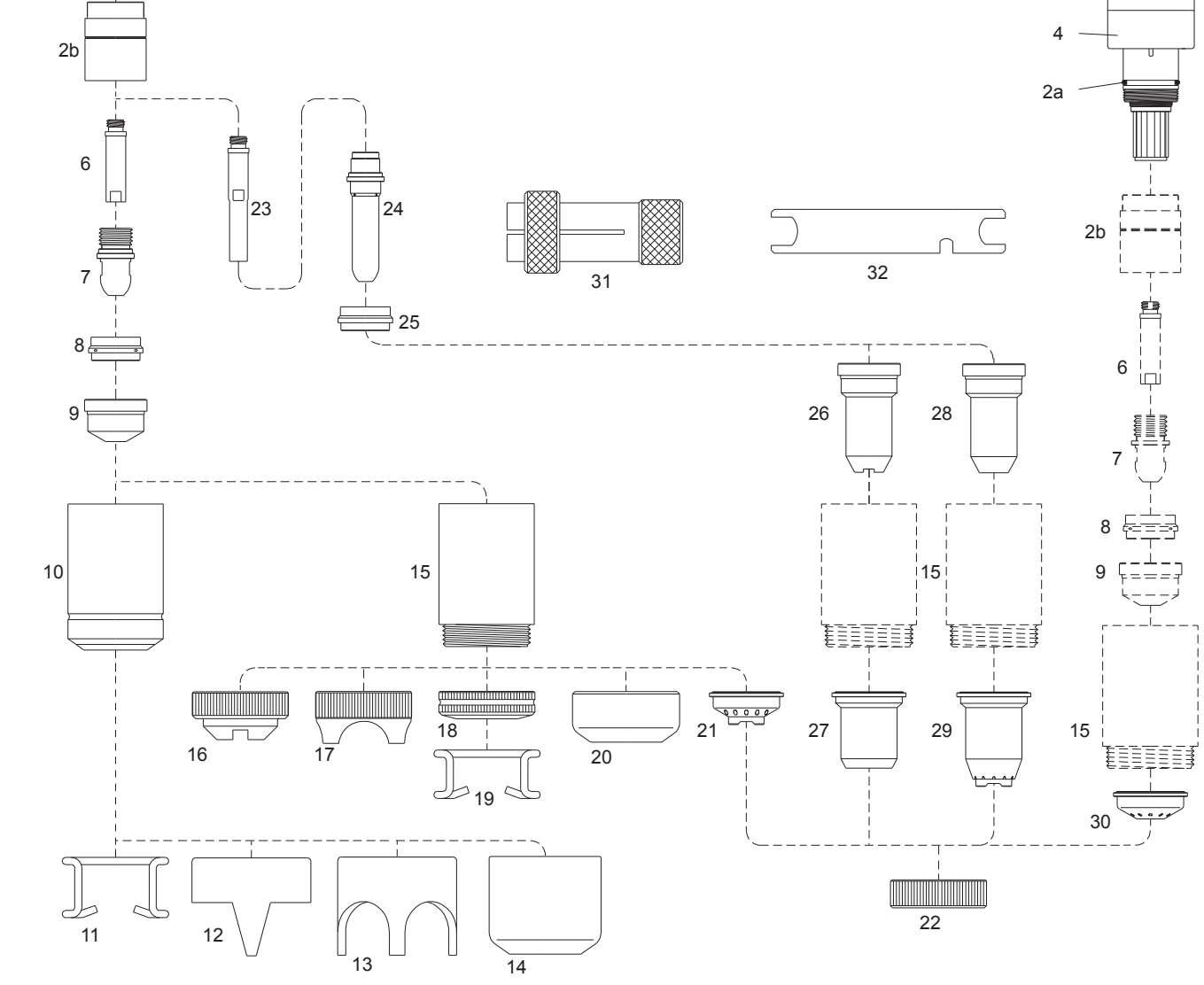
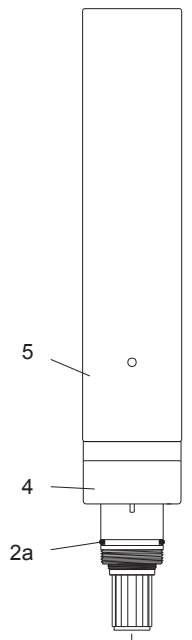
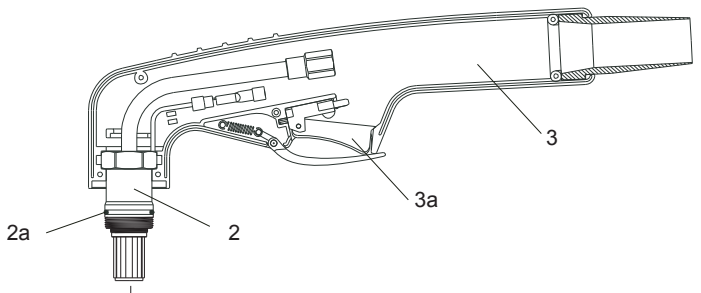
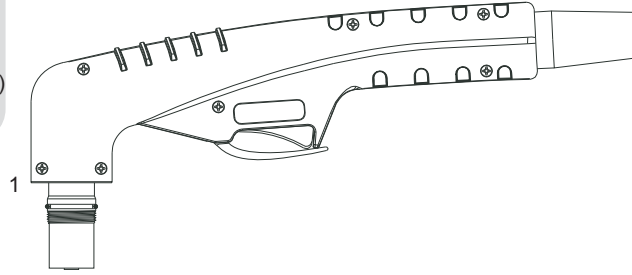
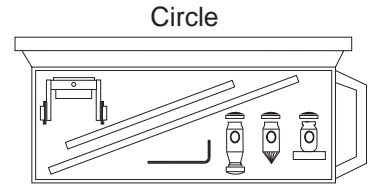
SPARTUS® SP141H / SP141M



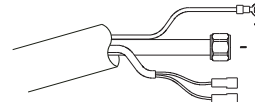
EN 60974-7



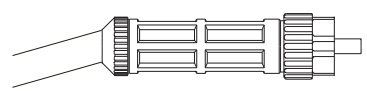
Cutting current: max 140 A
 Cooling type: air cooled
 Duty cycle: 60%
 Working pressure: 4.5 - 5.0 bar
 Min. air cooled flow rate: 220 l/min
 Arc ignition: HF
 Post gas flow time: 90s (recomended)



Connection M14x1 lub 1/4"



Central connector



SPARTUS®
SP141H / SP141M

TRAFIMET®
A140 / P140®

ERGOCUT® A141® / AUTOCUT® P141®

CODE	REF. NO.	DESCRIPTION
06250/LT	PA0101 PA1500 PA1502	SP141H Hand torch, 6m (connection M14x1)
06251/LT	PA1504	SP141H Hand torch, 6m (central connector)
06350/LT	PA0102	SP141H Hand torch, 12m (connection M14x1)
06351/LT	PA1505	SP141H Hand torch, 12m (central connector)
06450	PA0103	SP141M Machine torch, 6m (connection M14x1)
06451	PA0145	SP141M Machine torch, 6m (central connector)
06550	PA0104	SP141M Machine torch, 12m (connection M14x1)
06551	PA0146	SP141M Machine torch, 12m (central connector)

... other connections see catalog page 4.05

NO.	CODE	REF. NO.	[H] [M]	DESCRIPTION
1	06201/KIT	PF0155	•	Hand torch head with handgrip
2	06201		•	Hand torch head
2a	06000.60	EA0131	• •	O-ring (20pcs/pck)
2b	60080		• •	Front insulator
3	09706		•	Handgrip with microswitch
3a	07301.20	BX0020	•	Switch
4	06400	PF0102	•	Machine torch head
5	03310		•	Machine handle
6	05004		• •	Diffusor
7	52535	PR0101	• •	Electrode
8	60030	PE0101	• •	Swirl ring
9	51154	PR0101-11	• •	Tip fi 1.1
	51155	PR0101-14	• •	Tip fi 1.4
	51156	PR0101-17	• •	Tip fi 1.7
	51157	PR0101-19	• •	Tip fi 1.9
	51158	PR0101-30	•	Gouging tip fi 3.0
10	60375	PC0101 PC0102	•	Retaining cap Long Life
11	51910	CV0011	•	Spacer spring (10pcs/pck)
12	60370	CV0012	•	Double pointed spacer
13	60371	CV0014	•	Crown spacer
14	60373	CV0013	•	Gouging spacer
15	60385	PC0103 PC0131	• •	Retaining cap
	60385/V		• •	Retaining cap Max Life
16	51940	CV0023	•	Spacer for contact cutting, hand
17	51945	CV0039	•	Large spacer for contact cutting
18	51952		•	Spring holder protection nut
19	51911		•	Spacer spring (10pcs/pck)
20	51953		•	Spacer gouging
21	51950		•	Spacer for contact cutting, hand
22	51959		• •	Locking nut
23	05005		•	Diffusor
24	52530		•	Extended electrode (60031)
25	60031		•	Swirl ring
26	51149	PD0111	•	Extended tip fi 1.1 max 50A
27	51957	CV0008	•	Shield cap hand max 50A
28	51149.14	PD0117-14	•	Extended tip fi 1.4
	51149.17	PD0117-17	•	Extended tip fi 1.7
	51149.19	PD0117-19	•	Extended tip fi 1.9
29	51958	CV0009	•	Spacer for contact cutting, hand
30	51951		•	Shield cap, machine
31	60369	GR0060	• •	Extractor for swirl ring
32	60368		• •	Wrench for electrode
	04220		•	Cable, 6m - (M14x1) - hand torch
	04230		•	Cable, 12m, (M14x1) - hand torch
	04222		•	Cable 6m, (M14x1) - machine torch
	04232		•	Cable, 12m, M14x1 - machine torch
	51851		•	Circle cutting attachment



[H] - parts apply for hand torch

[M] - parts apply for machine torch