

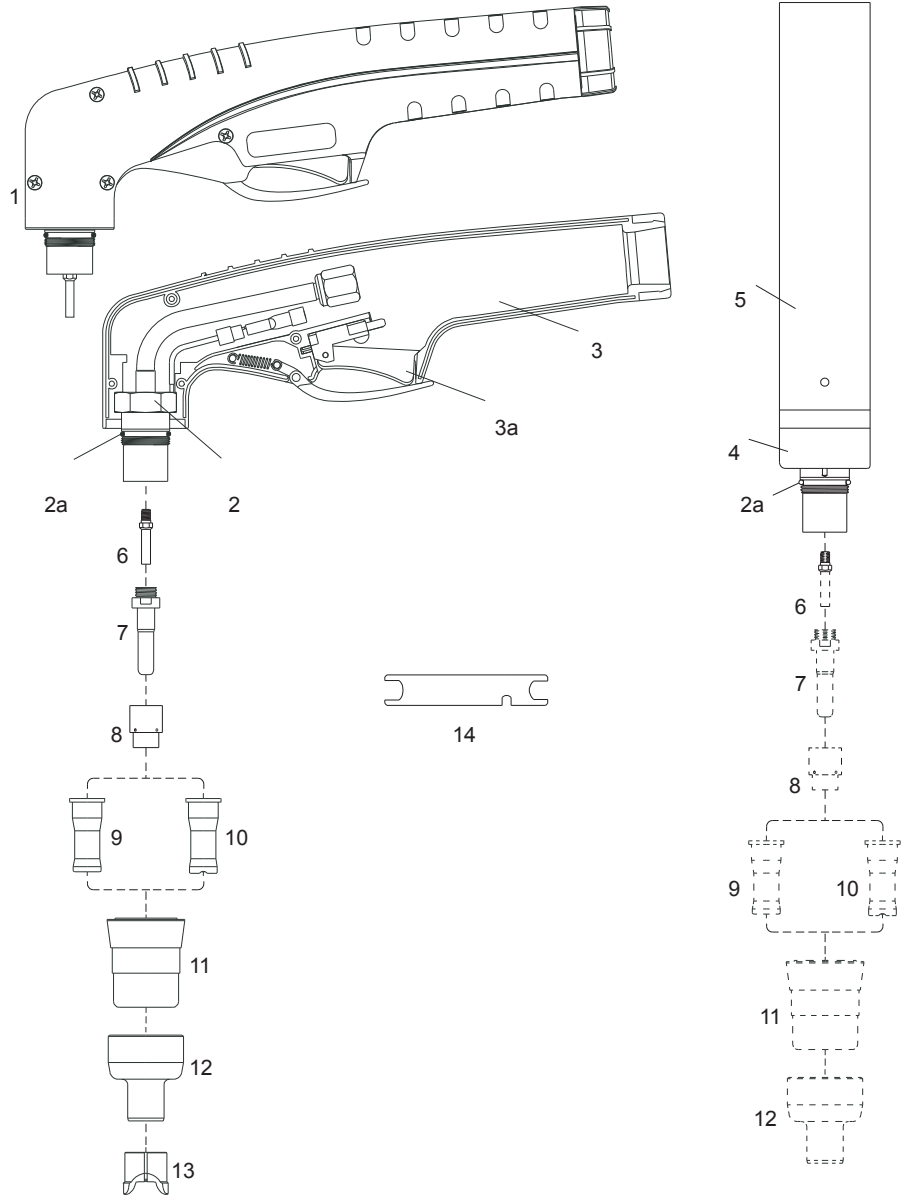
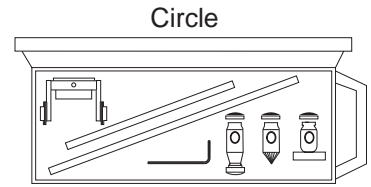
SPARTUS® SP90H / SP90M



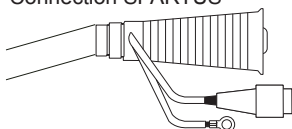
EN 60974-7



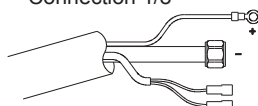
Cutting current:	max 90 A
Cooling type:	air cooled
Duty cycle:	60%
Working pressure:	4.5 - 5.0 bar
Min. air cooled flow rate:	160 l _{min}
Arc ignition:	HF
Post gas flow time:	90s (recomended)



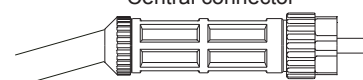
Connection SPARTUS®



Connection 1/8"



Central connector



CODE	REF. NO.	DESCRIPTION
03090/LT-SP1		SP90H Hand torch, 6m (connection SPARTUS®) ¹⁾
03091/LT-SP2		SP90H Hand torch, 6m (central connector SPARTUS®) ²⁾
03090/LT	1215	SP90H Hand torch, 6m (connection 1/8")
03091/LT	1214	SP90H Hand torch, 6m (central connector)
03190/LT	1215.20	SP90H Hand torch 12m (connection 1/8")
03191/LT	1214.20	SP90H Hand torch 12m (central connector)
03490		SP90M Machine torch, 6m (connection 1/8")
03491/S	1218	SP90M Machine torch, 6m (central connector)
03590		SP90M Machine torch 12m (connection 1/8")
03591/S	1218.20	SP90M Machine torch 12m (central connector)

... other connections see catalog page 4.05

NO.	CODE	REF. NO.	[H] [M]	DESCRIPTION
1	01091/KIT		•	Hand torch head with handgrip
2	01091		•	Hand torch head
2a	01000.60	3.160.067	• •	O-ring (20pcs/pck)
3	09606		•	Handgrip with microswitch
3a	07301.20		•	Switch
4	03390	1348	•	Machine torch head
5	03310	3.055.623	•	Machine handle
6	01090.42		• •	Diffusor
7	52553	1368	• •	Extended electrode
8	60001		• •	Swirl ring
9	51090		• •	Tip fi 1.0 20-50A Long Life
10	51092		• •	Tip fi 1.2 50-70A Long Life
	51093		• •	Tip fi 1.3 70-90A Long Life
11	60322		• •	Retaining cap
12	51972		• •	Shield cap hand
13	51973		•	Spacer for contact cutting hand
14	60368	3.045.012	• •	Wrench for electrode
	03093/S	1370	•	Cable, 6m, 1/8", hand, ready for central connector
	03193/S	1395	•	Cable, 12m, 1/8", hand, ready for central connector
	03493/S		•	Cable, 6m, 1/8", machine, ready for central connector
	03593/S	1306	•	Cable, 12m, 1/8", machine, ready central connector
	51850	0163	•	Circle cutting attachment

[H] - parts apply for hand torch

[M] - parts apply for machine torch

¹⁾ Torch connection fit to SPARTUS CUT machines (M16 cap with 2/4 pin plug)

²⁾ Torch connection fit to SPARTUS CUT machines (central connector)